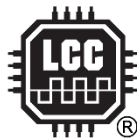
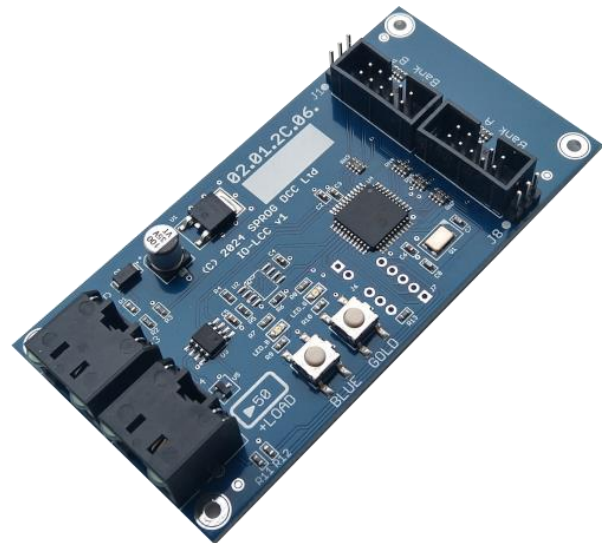


## IO-LCC LCC® I/O node

### Features:

- Two I/O banks of eight channels for a total of sixteen channels
- Support for servos on bank A (requires external hardware)
- Eight individual logic level I/O channels per bank
- Jumper selectable pull-up/down for logic inputs
- Two status LEDs configurable through the CDI
- Two pushbuttons configurable through the CDI
- Can consume own generated events for event chaining
- Dual RJ45 for network pass-through or terminator
- Powered from the LCC network
- Bootloader for firmware updates



LCC® is a registered trademark of the NMRA

OpenLCB is a trademark of the OpenLCB Group

SPROG DCC Ltd Anvil House, Butt Lane, Harbury,  
Leamington Spa, CV33 9JL United Kingdom  
<http://www.sprog-dcc.co.uk> [sprog@sprog-dcc.com](mailto:sprog@sprog-dcc.com)