

Installing SPROG II Drivers on Windows 8

Updated 30th May 2021

This document is only applicable to SPROG II version 2 and earlier.

This document applies to Windows 8 and Windows 8.1.

For other versions of SPROG II, 3 or Nano see the appropriate document on the SPROG DCC Ltd website <https://www.sprog-dcc.co.uk/download-page>

The drivers were originally included on a CD-ROM supplied with each SPROG II. They are now available on an optional USB stick but can also be downloaded from our website.

http://www.sprog-dcc.co.uk/downloads/Windows_2000_XP_Vista_7.zip

Unzip the downloaded file and make a note of the path to the files, for use in a later step.

The drivers are unsigned and you will need to disable driver signature enforcement. This is not recommended by Microsoft but is required if you wish to use your SPROG II with Windows 8.

These steps are only required when the drivers are first installed. Subsequent use of the SPROG will load the drivers correctly.

The procedure may need to be repeated if your SPROG stops working after a major Windows update.

Section 1 Disable Driver Signature Enforcement

Windows 8

Press Windows Key + i on your keyboard to access the settings charm and select "Change PC Settings".

Select "General" in the left hand list then scroll the right hand pane down until you can see "Advanced Startup" and click "Restart Now".

When Windows restarts click "Troubleshoot".

Click "Advanced Options".

Click "Startup Settings"

Click "Restart". Windows will restarts into the Startup Settings menu.

Press F7 on your keyboard to "Disable Driver Signature Enforcement"

Your PC will reboot and you can now install the drivers.

Windows 8.1

For an illustrated guide see <http://www.howtogeek.com/167723/how-to-disable-driver-signature-verification-on-64-bit-windows-8.1-so-that-you-can-install-unsigned-drivers/>

Press Windows Key + i on your keyboard to access the settings charm and select “Change PC Settings” at the bottom right:

Select “Update & Recovery” in the left hand list:

Select “Recovery” in the left hand list:

then select “Restart Now” under “Advanced Startup”

When Windows restarts click “Troubleshoot”:

Click “Advanced options”

Click “Startup Settings”:

Click “Restart”:

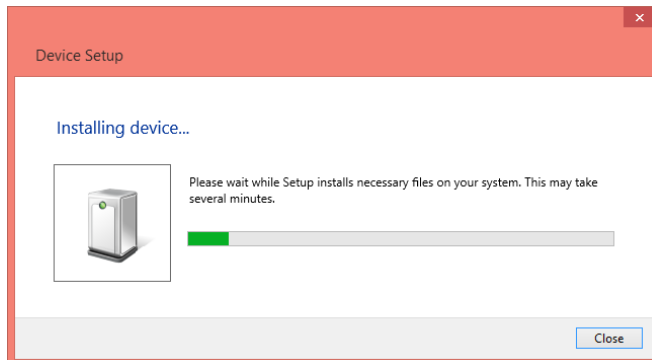
When Windows restarts, press F7 (or F7) on your keyboard to “Disable Driver Signature Enforcement”

Your PC will reboot and you can now install the drivers.

Section 2 Installing the Drivers

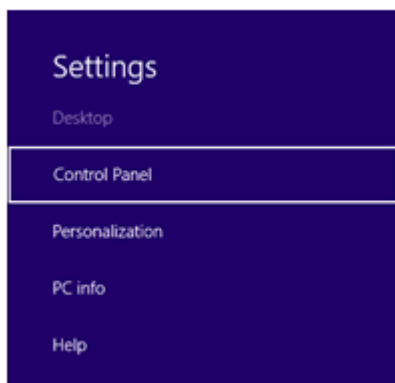
Connect the SPROG to the PC via USB and to the power supply. Turn on the power.

Cancel the Device Setup if it appears. It may appear minimised in the task bar. Maximise it and cancel with the X in the top right corner:

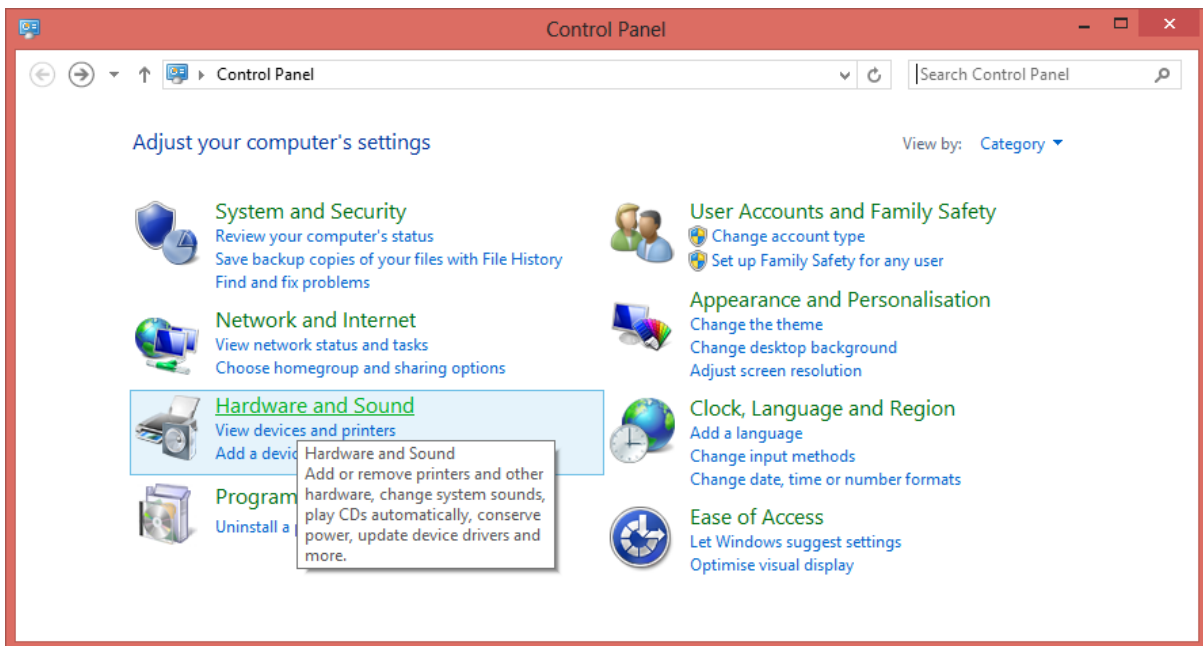


Open Device Manager

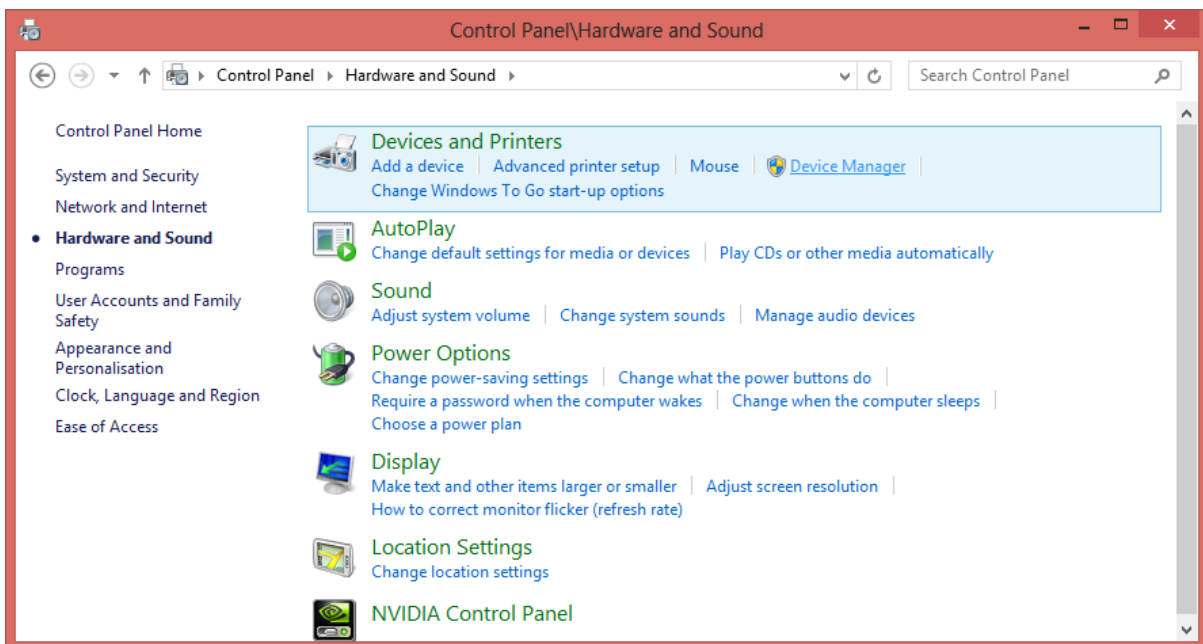
Press Windows Key + I on your keyboard to access the settings charm and select “Control Panel” at the top right:



Select "Hardware and Sound":

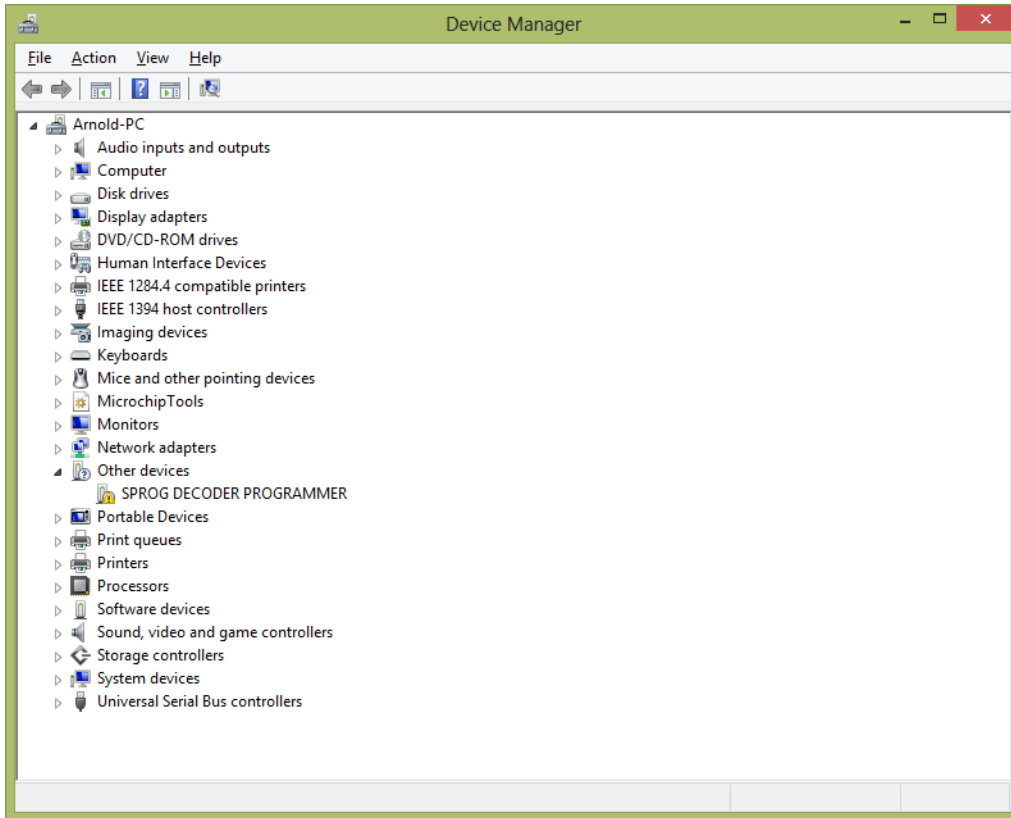


Select "Device Manager" in "Devices and Printers":



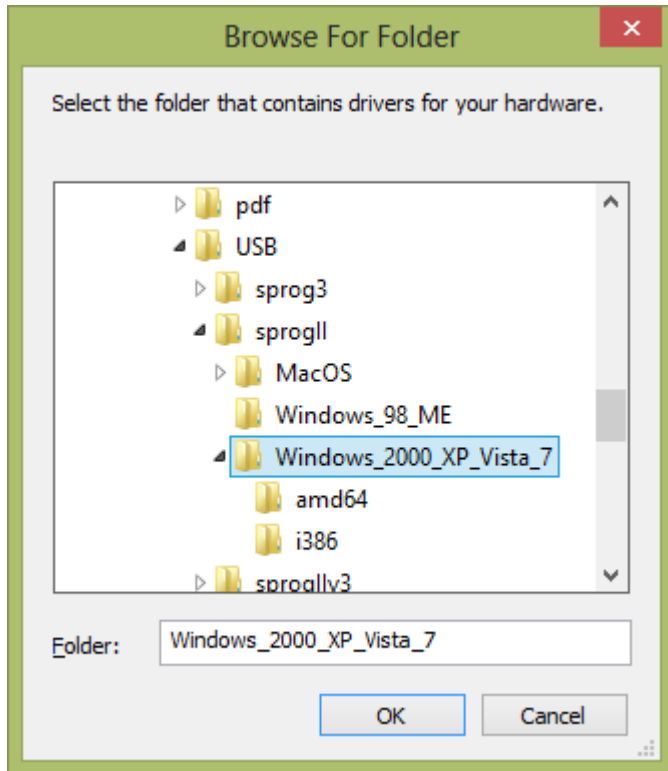
SPROG II use FTDI drivers, for which installation is a two-step process.

Open "Other Devices" and you will see the SPROG listed with a yellow exclamation mark:

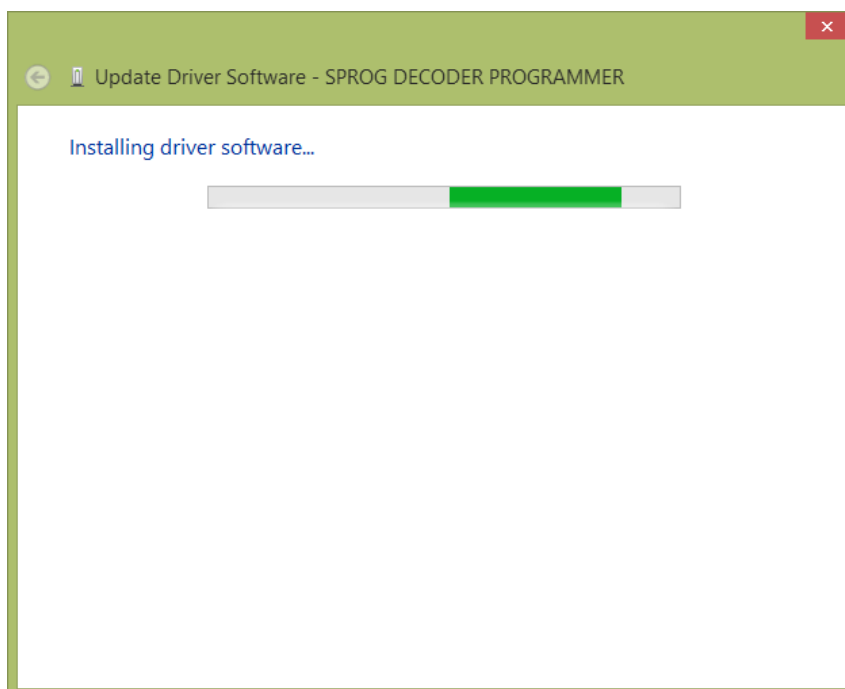


Click the SPROG device with the right mouse key and select “Update Driver Software...”.

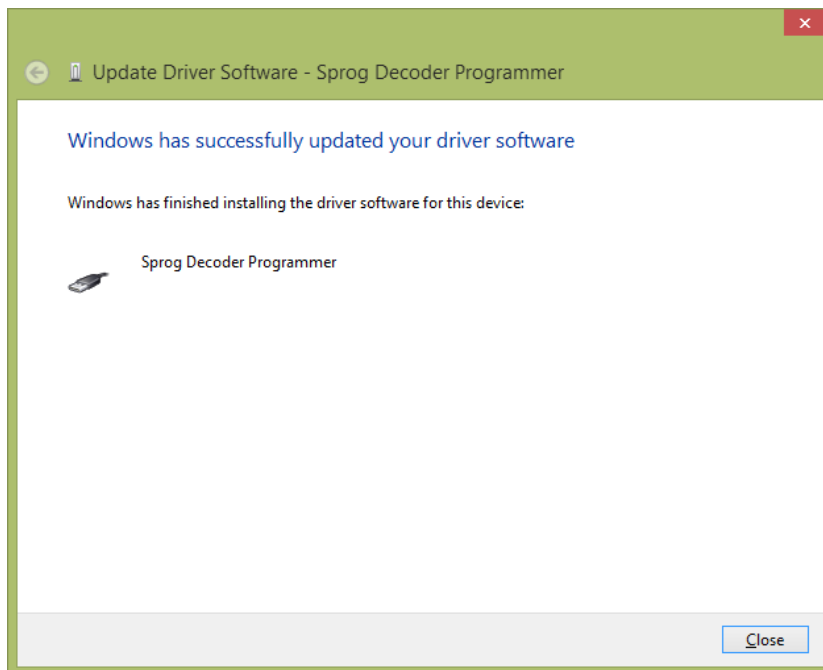
Browse to the USB\sprogl\Windows_2000_XP_Vista_7 folder on the CD-ROM, USB stick or where you unzipped the downloaded drivers.



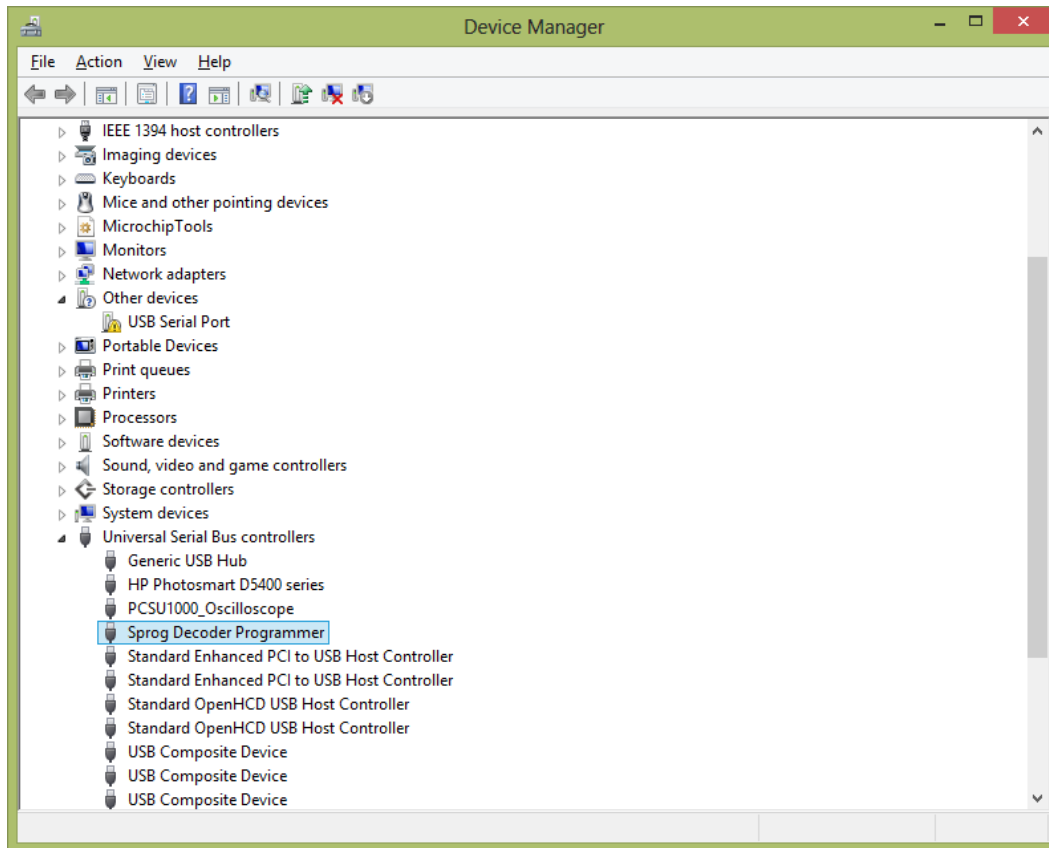
Click OK and the drivers will begin installing.



After a little while the first step will complete:



Look in the device manager again and you should see USB serial Port listed under other devices and the SPROG under Universal Serial Bus controllers.



Right click on USB Serial Port and update the drivers as in the previous step, using the same downloaded driver files.

When this second step is complete, the SPROG will be listed under Ports (COM & LPT). Note the COM port assignment for use in the DecoderPro preferences (COM5 in this example):

