

Installing SPROG IIv3, IIv4, 3 and Nano Drivers on Windows 8

Updated 30th May 2021

This document applies to SPROG II versions 3 and 4, SPROG 3 (all versions) and SPROG Nano on Windows 10. For other products see the appropriate document on the SPROG DCC Ltd website <https://www.sprog-dcc.co.uk/download-page>

This document applies to Windows 8 and Windows 8.1.

The drivers are included on the optional USB stick but can also be downloaded from our website <https://www.sprog-dcc.co.uk/downloads/sproglu.zip>

Unzip the downloaded file and make a note of the path to the files, for use in a later step.

The drivers are unsigned and you will need to disable driver signature enforcement. This is not recommended by Microsoft but is required if you wish to use your SPROG with Windows 8.

These steps are only required when the drivers are first installed. Subsequent use of the SPROG will load the drivers correctly.

The procedure may need to be repeated if your SPROG stops working after a major Windows update.

Section 1 Disable Driver Signature Enforcement

Windows 8

Press Windows Key + i on your keyboard to access the settings charm and select "Change PC Settings".

Select "General" in the left hand list then scroll the right hand pane down until you can see "Advanced Startup" and click "Restart Now".

When Windows restarts click "Troubleshoot".

Click "Advanced Options".

Click "Startup Settings"

Click "Restart". Windows will restarts into the Startup Settings menu.

Press F7 on your keyboard to "Disable Driver Signature Enforcement"

Your PC will reboot and you can now install the drivers. Skip to section 2.

Windows 8.1

For an illustrated guide see <http://www.howtogeek.com/167723/how-to-disable-driver-signature-verification-on-64-bit-windows-8.1-so-that-you-can-install-unsigned-drivers/>

Press Windows Key + i on your keyboard to access the settings charm and select "Change PC Settings" at the bottom right:

Select "Update & Recovery" in the left hand list:

Select "Recovery" in the left hand list:

then select "Restart Now" under "Advanced Startup"

When Windows restarts click "Troubleshoot":

Click "Advanced options"

Click "Startup Settings":

Click "Restart":

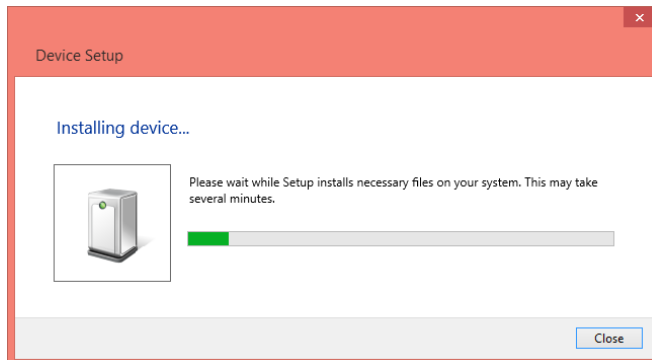
When Windows restarts, press F7 (or F7) on your keyboard to "Disable Driver Signature Enforcement"

Your PC will reboot and you can now install the drivers.

Section 2 Installing the Drivers

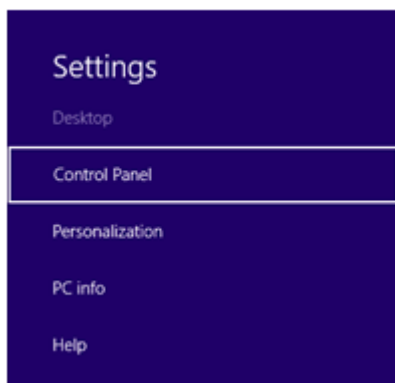
Connect the SPROG to the PC via USB and to the power supply. Turn on the power.

Cancel the Device Setup if it appears. It may appear minimised in the task bar. Maximise it and cancel with the X in the top right corner:

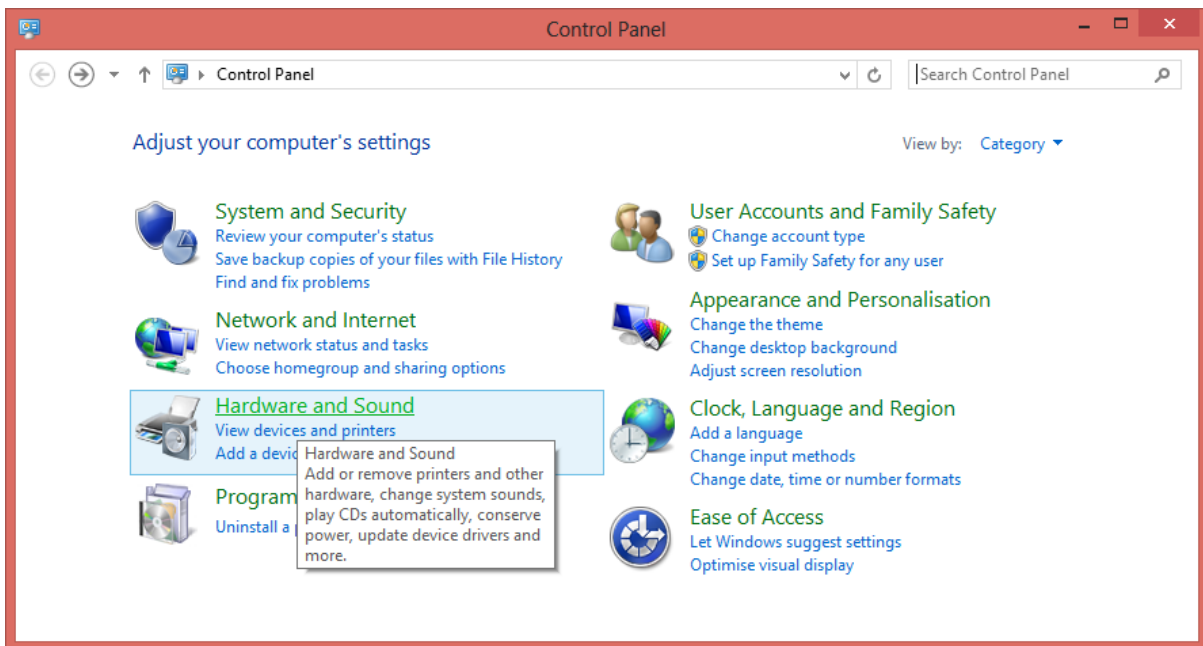


Open Device Manager

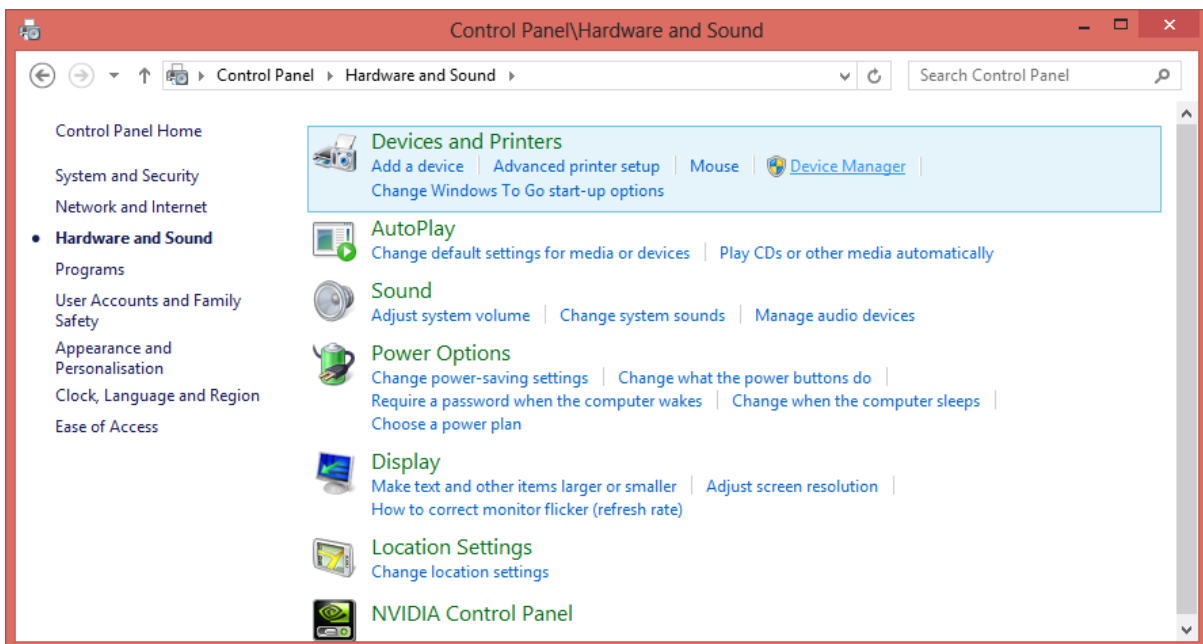
Press Windows Key + I on your keyboard to access the settings charm and select “Control Panel” at the top right:



Select "Hardware and Sound":

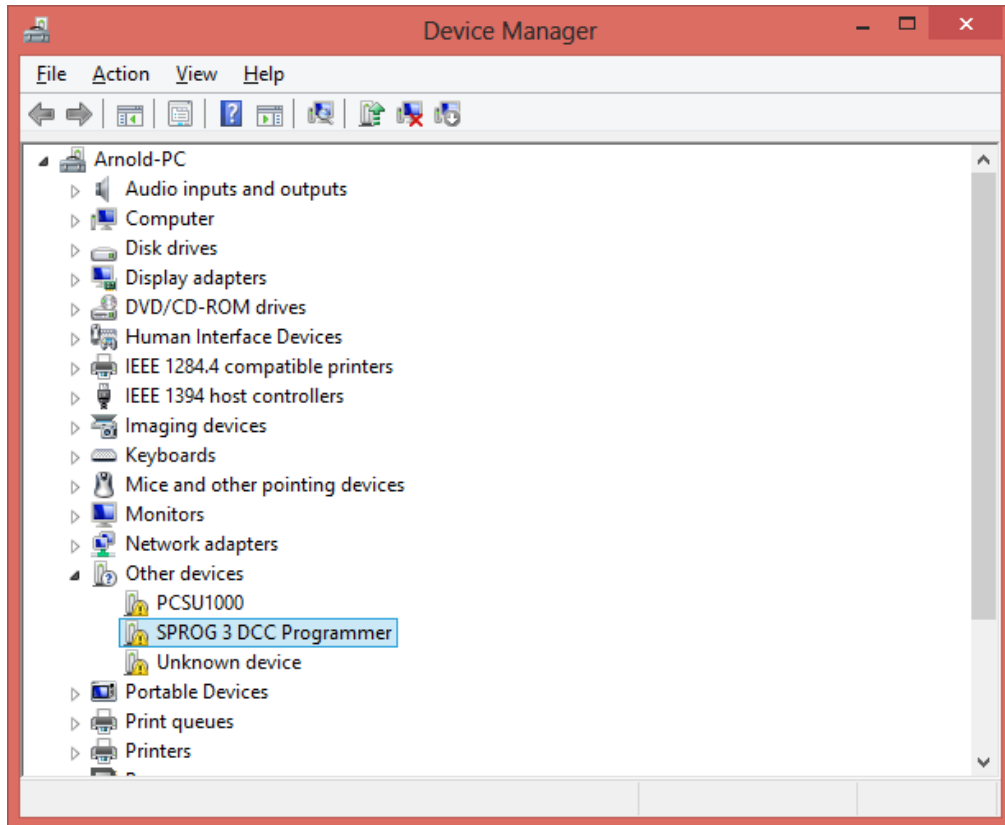


Select "Device Manager" in "Devices and Printers":



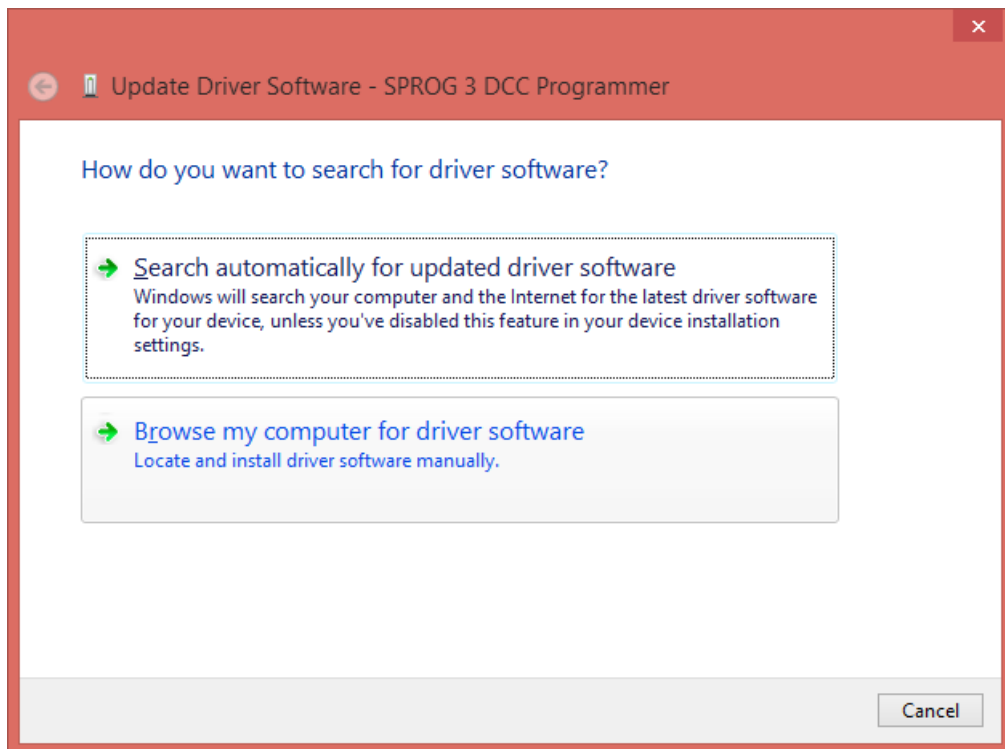
This example shows the installation of a SPROG 3. Installation of other SPROG drivers is very similar.

Open “Other Devices” and you will see the SPROG listed with a yellow exclamation mark:

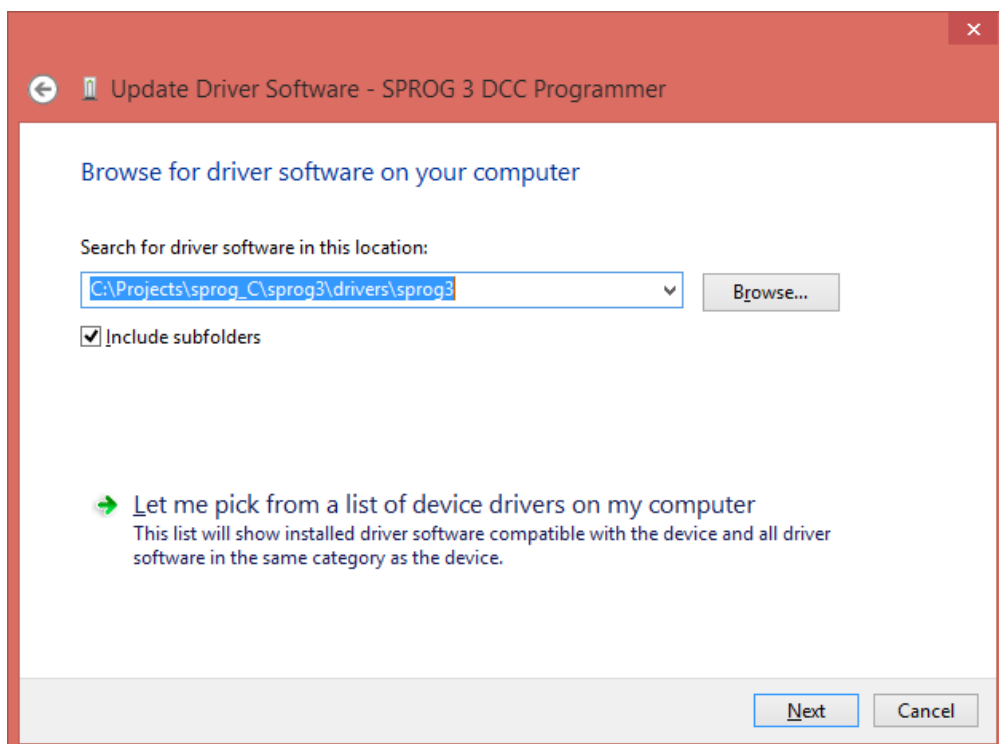


Click the SPROG device with the right mouse key and select “Update Driver Software...”.

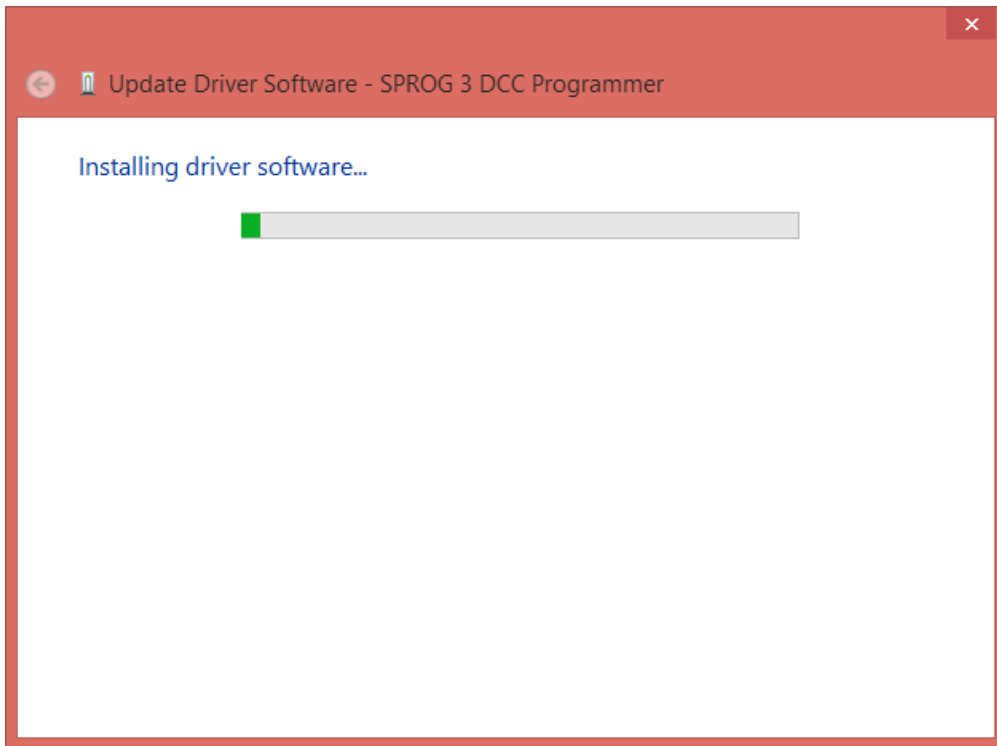
Select "Browse my computer...".



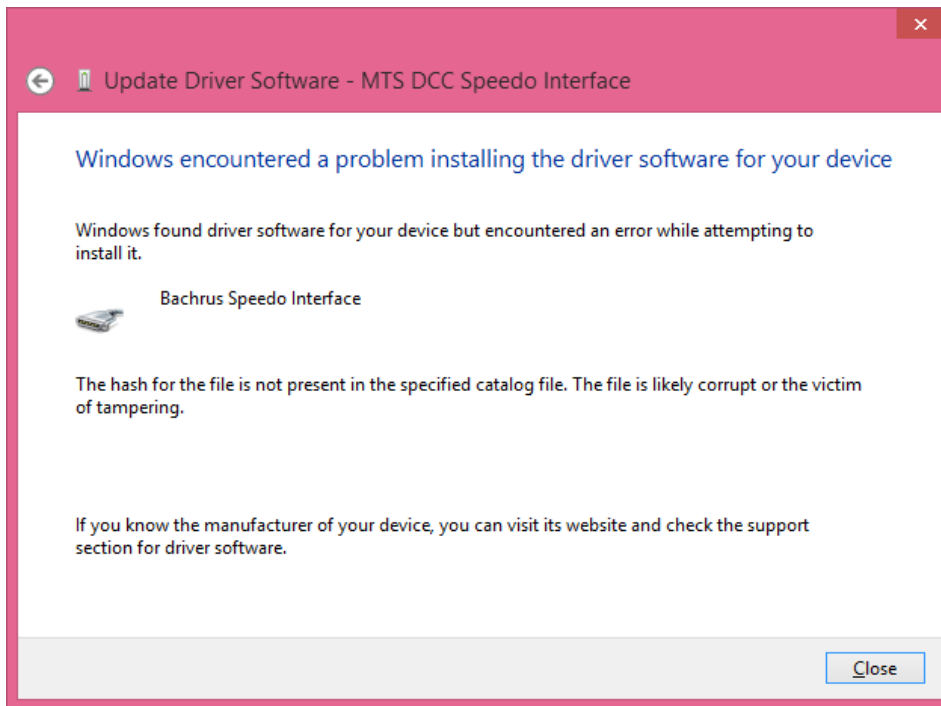
Browse to the directory containing the drivers. On the optional USB stick this will be the USB\<sprog type> directory, e.g. USB\sprog3. If you downloaded the drivers, unzip them and find the USB directory. Use the sprog3 drivers if you have a SPROG IIv4. Click "Next":



The installation will begin:



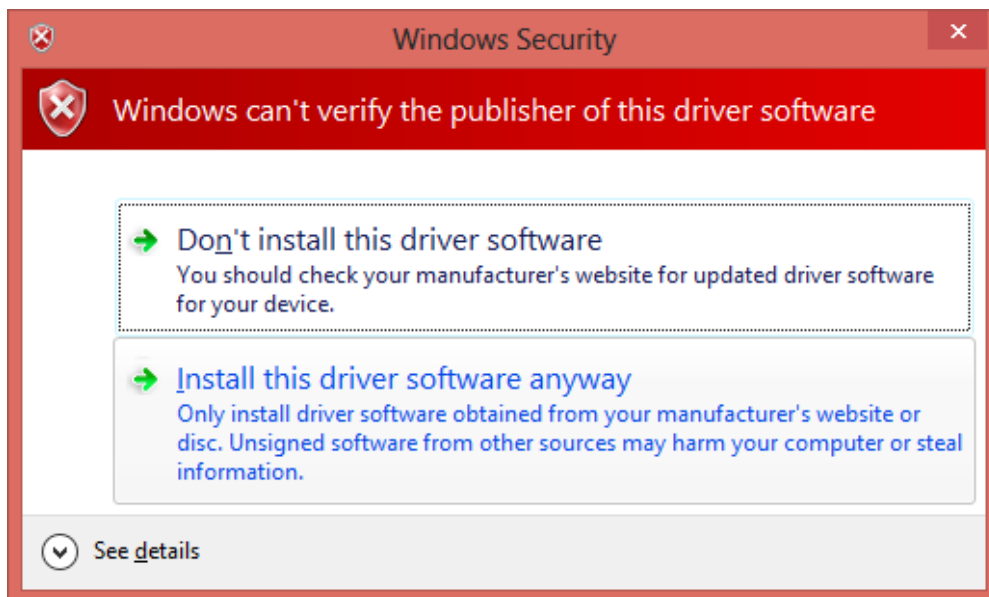
If you see an error message similar to this on Windows 8 or 8.1:

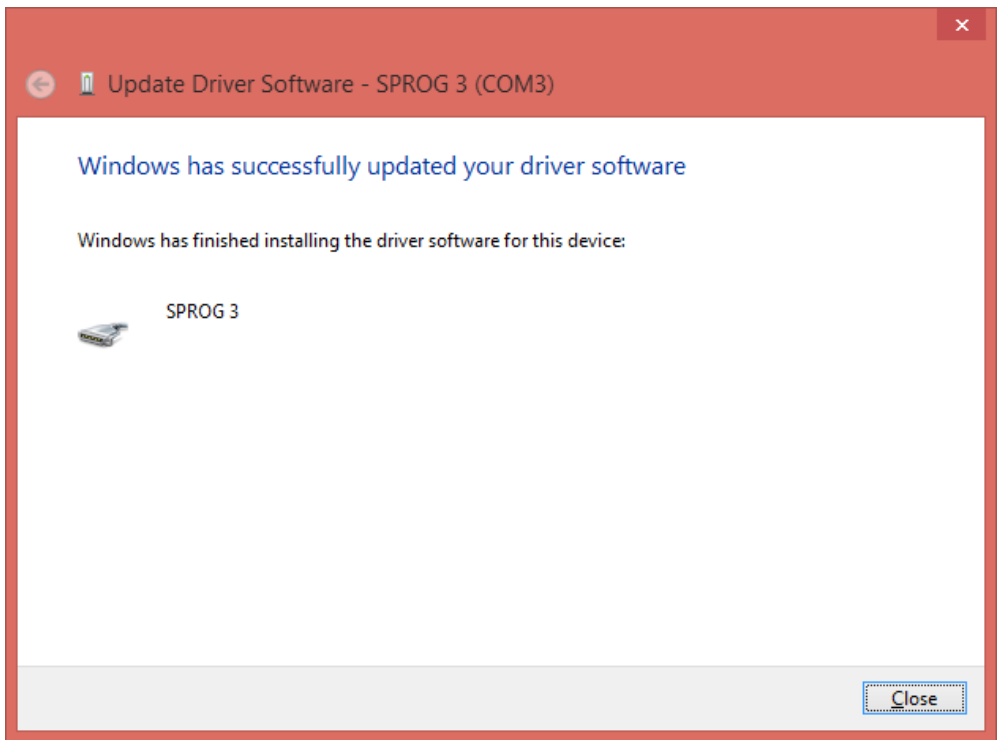


This indicates that you have not successfully disabled the driver signing and you should repeat the steps to do so.

Windows will complain that the driver is unsigned:

Click "Install this driver software anyway..."





Your driver is now installed.

Note the COM port to be used in the DecoderPro preferences (COM3 in this example):

