

Installing SPROG II Drivers on Windows 8

Updated 26th April 2021

This document is provided for reference, we do not have Windows 7 systems and can offer very little support.

This document is only applicable to SPROG II version 2 and earlier.

This document applies to Windows 7.

For other versions of SPROG II, 3 or Nano see the appropriate document on the SPROG DCC Ltd website <https://www.sprog-dcc.co.uk/download-page>

The drivers were originally included on a CD-ROM supplied with each SPROG II but can also be downloaded from our website. http://www.sprog-dcc.co.uk/downloads/Windows_2000_XP_Vista_7.zip

Unzip the downloaded file and make a note of the path to the files, for use in a later step.

Briefly, the process is as follows:

- Open Device Manager
- Under "Other Devices", update the drivers for SPROG DECODER PROGRAMMER
- check under "Ports (COM & LPT)" for assigned com port number

When the SPROG is recognized by the computer, the system will attempt to install the appropriate device drivers automatically.

However, specific drivers are needed for SPROG to function correctly, and will not normally be found by the automatic routine.

The correct USB drivers are provided on the standard installation CD-ROM in the "X":\USB\Windows_2000_XP_Vista_7 directory, where X is the drive letter of your CD-ROM drive (usually D). Using the CD, you should specify the appropriate location during installation, as shown in the example following. If you have downloaded the drivers, select the USB folder that you downloaded.

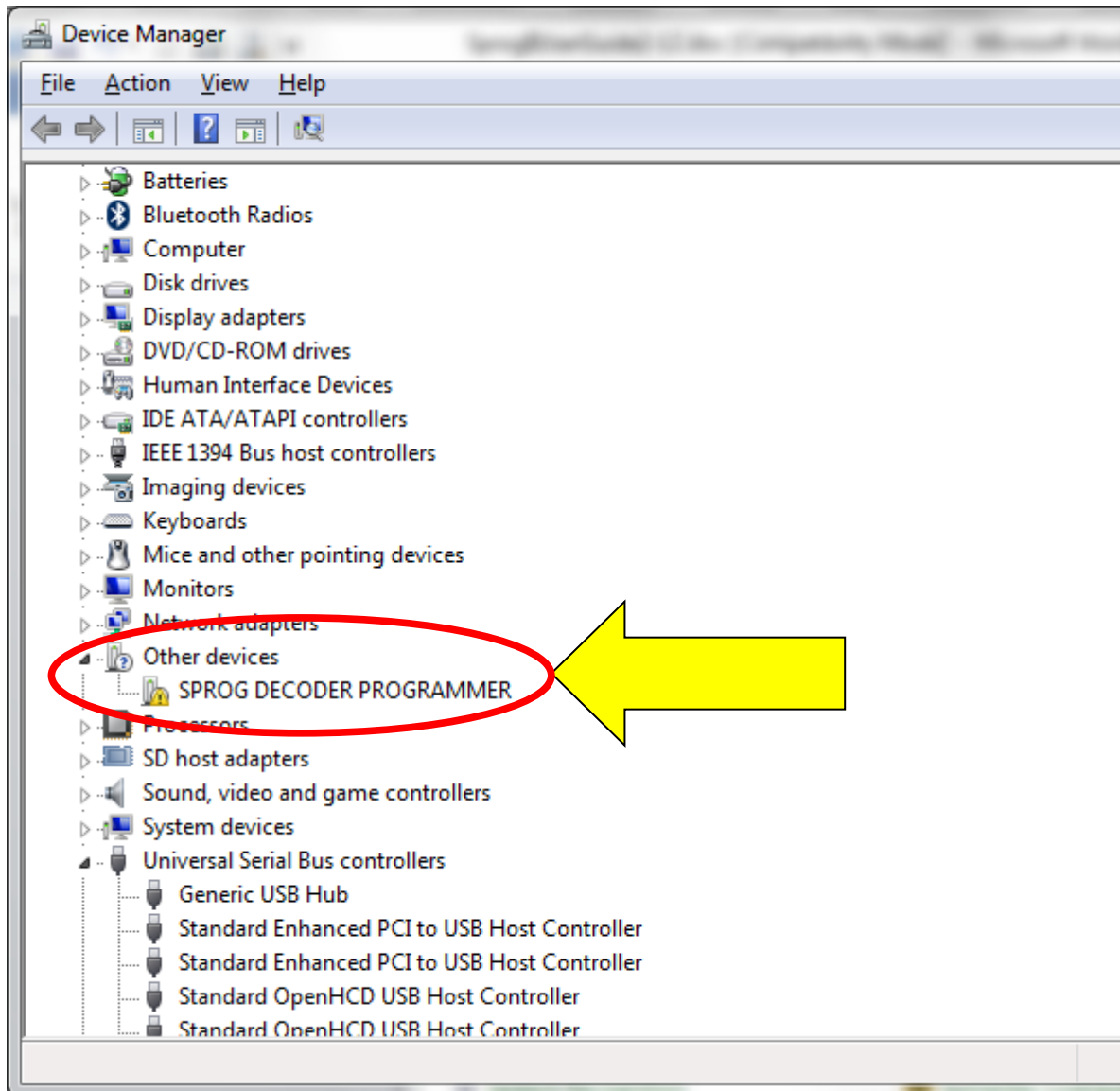
Note: the installation process will install TWO drivers, one for USB connection, and the second to assign and support serial communications. Allow the Installer process to complete twice.

USB Drivers (two installations)

Open Device Manager. Depending upon your edition of Windows 7, this may be accessed by slightly different paths.

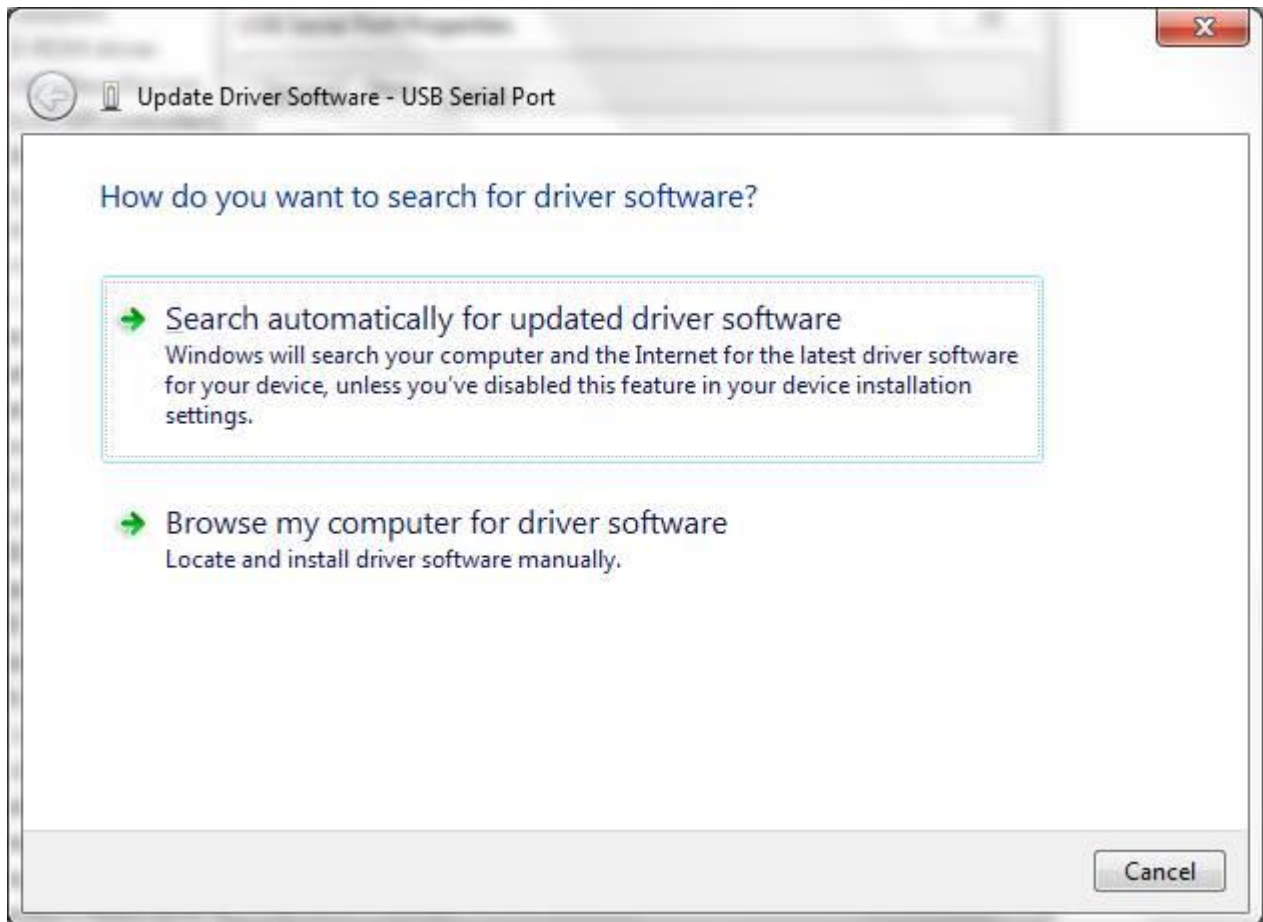
From the Start Menu, select Control Panel from the right hand list.

In Control Panel, select "Device Manager". If Device Manager is not shown, select "Hardware and Sound", and then Device Manager.



The SPROG DECODER PROGRAMMER will (most likely) appear under "Other Devices" and will have a small yellow warning symbol showing on the icon. You may also see a popup that says Windows was unable to install the driver properly. We will deal with that in the next steps.

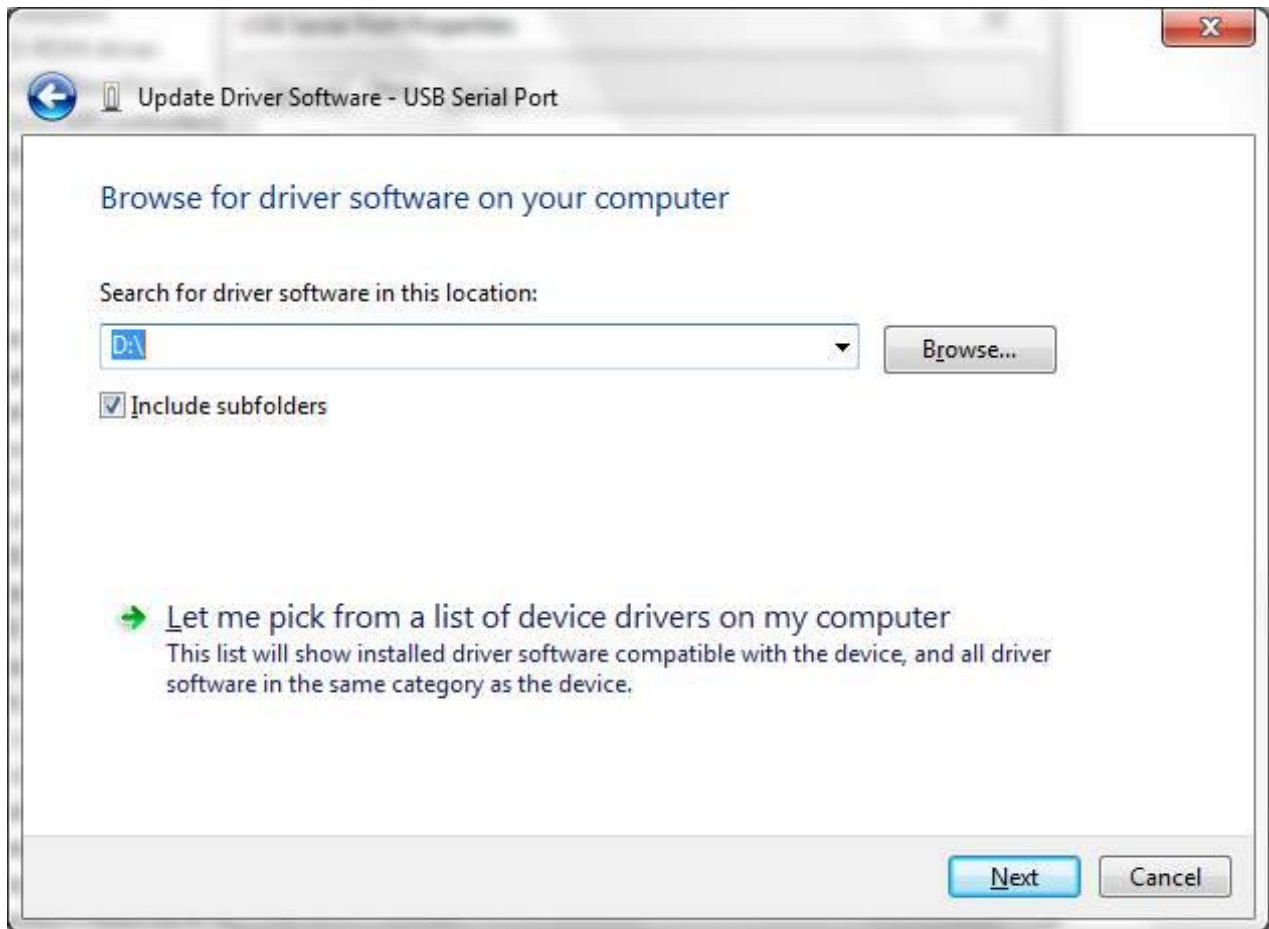
Point to the SPROG DECODER PROGRAMMER entry and press the Right mouse button. Select "Update Driver Software", or select Properties, and under the Drivers tab, click "Update Drivers".



Click "Browse my computer for driver software", and then click the Browse button to find the drive letter for the CD-ROM supplied with SPROG II.

If you do not have the CD, you can download the [USB Windows 2000 XP Vista 7 package](http://www.bbmgroup.com/sprog/install/USB/Windows_2000_XP_Vista_7_package) from [http://www.bbmgroup.com/sprog/install/USB/Windows 2000 XP Vista 7.zip](http://www.bbmgroup.com/sprog/install/USB/Windows_2000_XP_Vista_7.zip) for the drivers to install.

Check the "Include subfolders" box; see below, and then click the "Next" button.



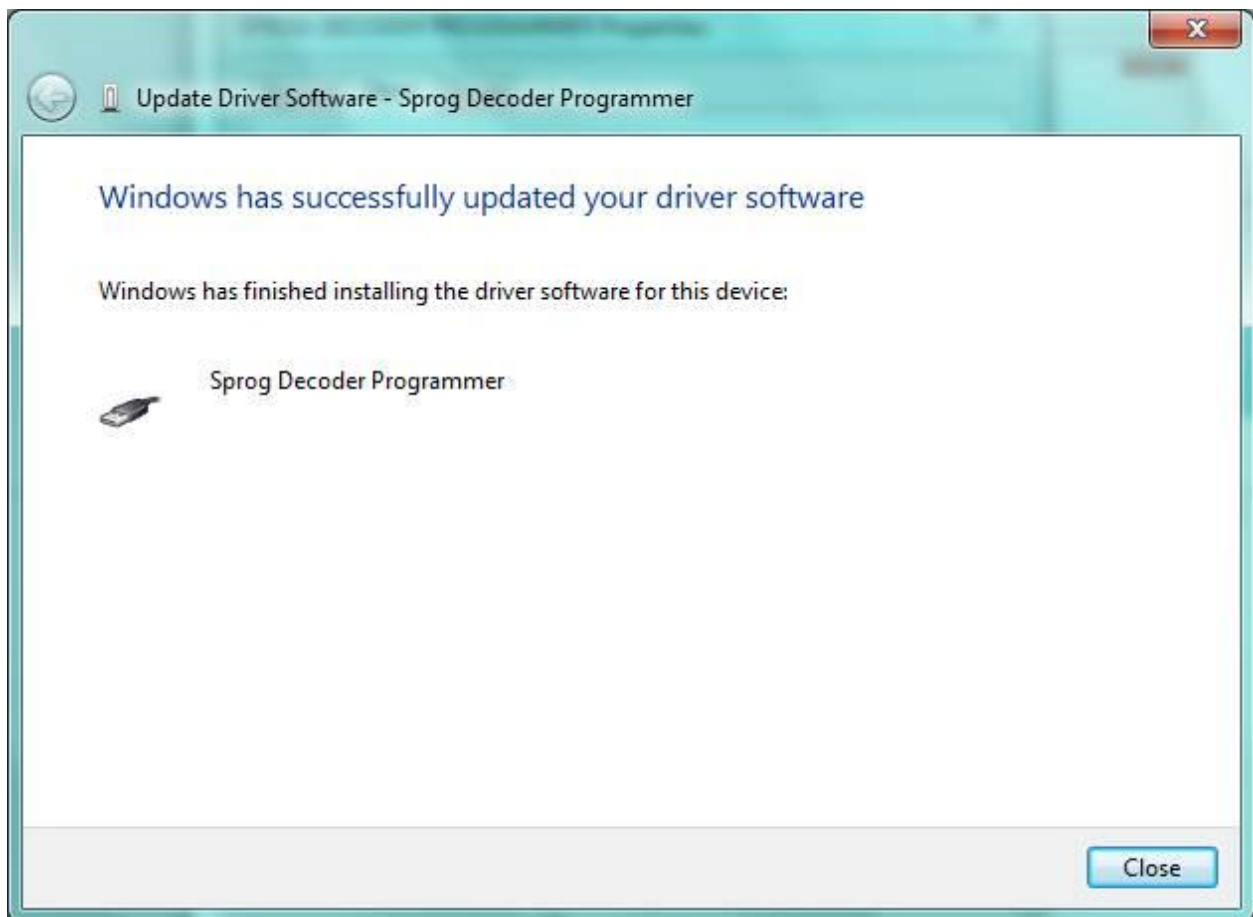
The wizard will take a short time to find and verify the drivers in this location.

You will then see a warning window similar to this:



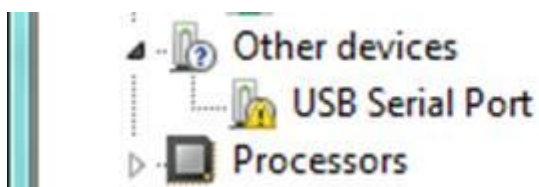
The base drivers are fully compatible with Windows7, and those supplied on the CD are the latest drivers. To make them SPROG II specific, the .inf files are edited which, unfortunately, causes this dialogue to appear.

Click "Install this driver software anyway".



Click "Close".

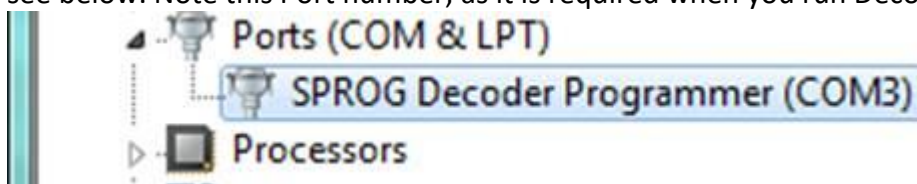
Now return to the Device Manager, and the entry will have changed.



Right click on the USB Serial Prot entry, to repeat the driver update process, updating the drivers on this new entry, and following exactly the same steps.

Do not cancel this next sequence, even though it appears duplicate!

Finally, the installation will complete, and the assigned serial port number will be displayed, see below. Note this Port number, as it is required when you run DecoderPro the first time.



Your install steps are now all completed, and it is time to start the software and use your SPROG II. Go on to the next major section of this Guide “Setting Preferences”.