

# Installing SPROG IIv3, IIv4, 3 and Nano Drivers on Windows 7

Updated 30<sup>th</sup> May 2021

This document is provided for reference, we do not have Windows 7 systems and can offer very little support.

This document is only applicable to SPROG II version 2 and earlier.

This document applies to Windows 7.

For other versions of SPROG II, 3 or Nano see the appropriate document on the SPROG DCC Ltd website <https://www.sprog-dcc.co.uk/download-page>

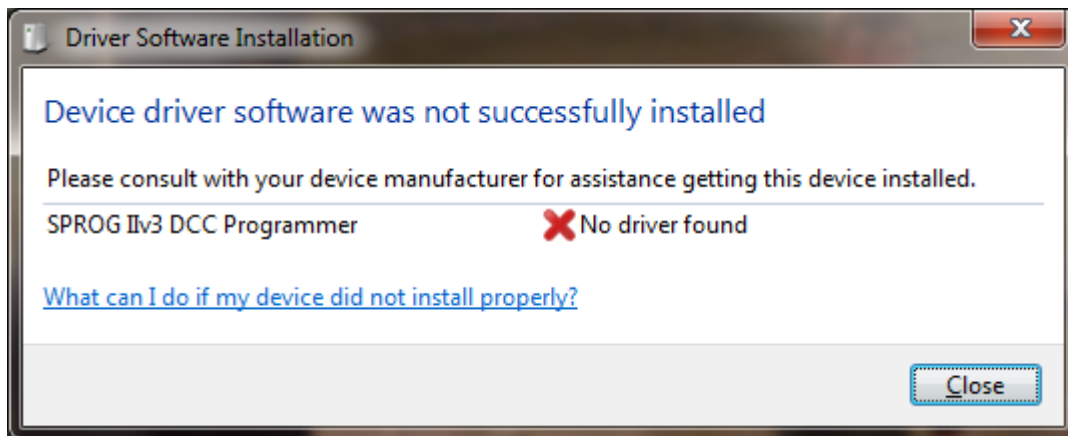
The drivers were originally included on a CD-ROM supplied with each SPROG II. They are now available on an optional USB stick but can also be downloaded from our website.

[http://www.sprog-dcc.co.uk/downloads/Windows\\_2000\\_XP\\_Vista\\_7.zip](http://www.sprog-dcc.co.uk/downloads/Windows_2000_XP_Vista_7.zip)

Unzip the downloaded file and make a note of the path to the files, for use in a later step.

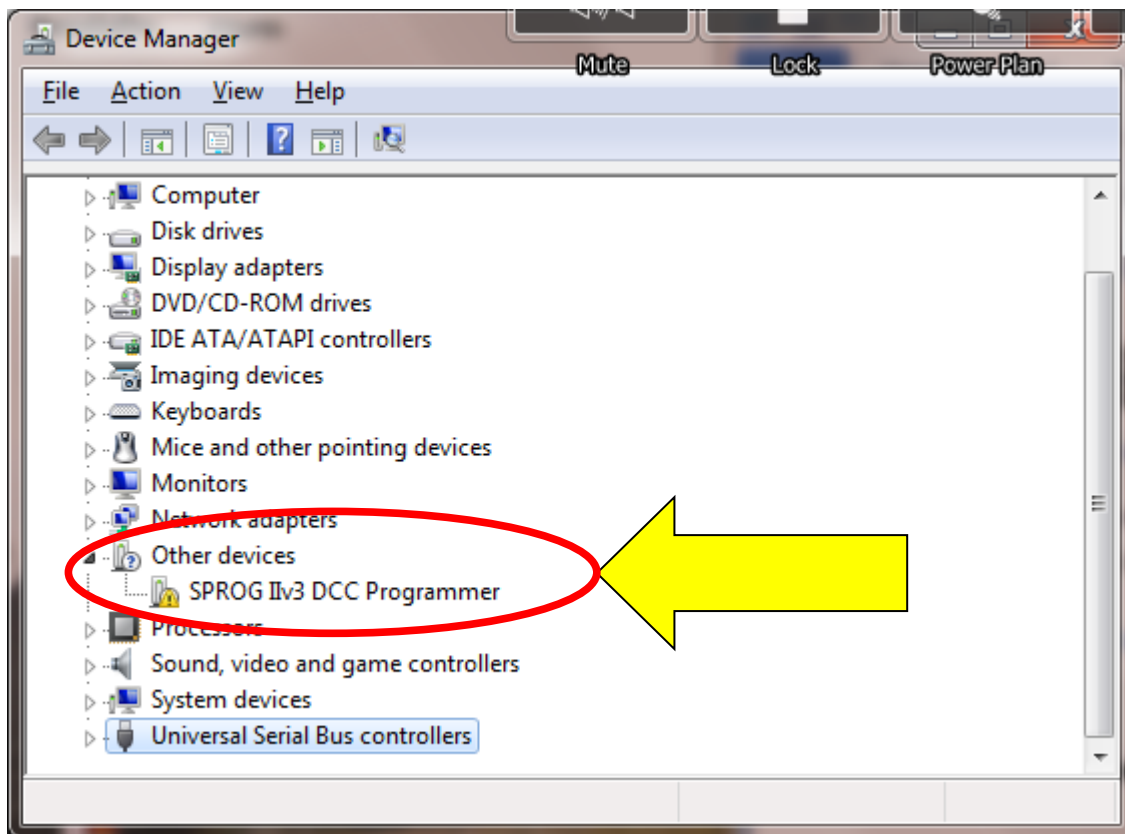
When the SPROG IIv3 is first plugged into a USB port you should see a bubble appear in the lower left corner of the screen “Installing device driver – click here for status”. If you click then a further status window opens.

The driver installation will not succeed at this point and you will see “Device driver software was not successfully installed” in a bubble in the lower left of the screen or the status window:

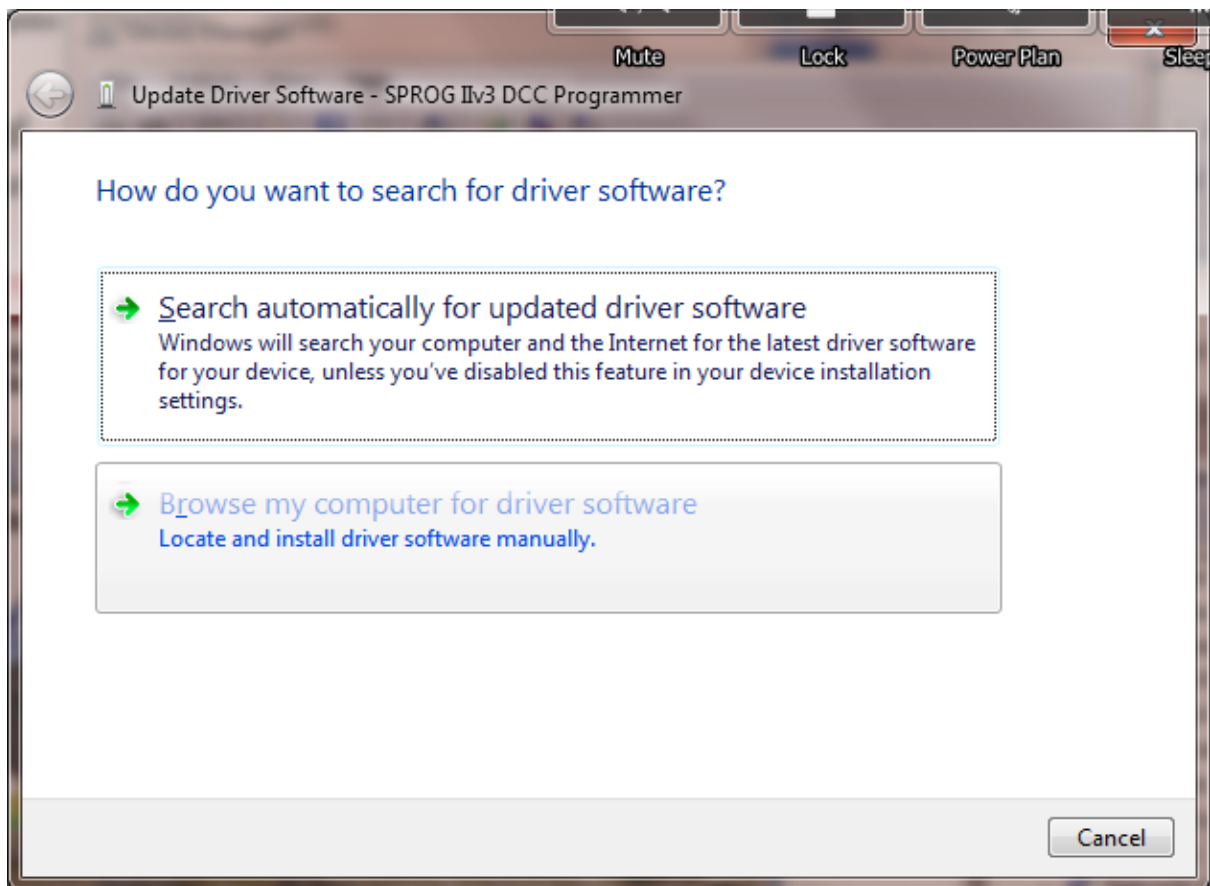


Click “Close”

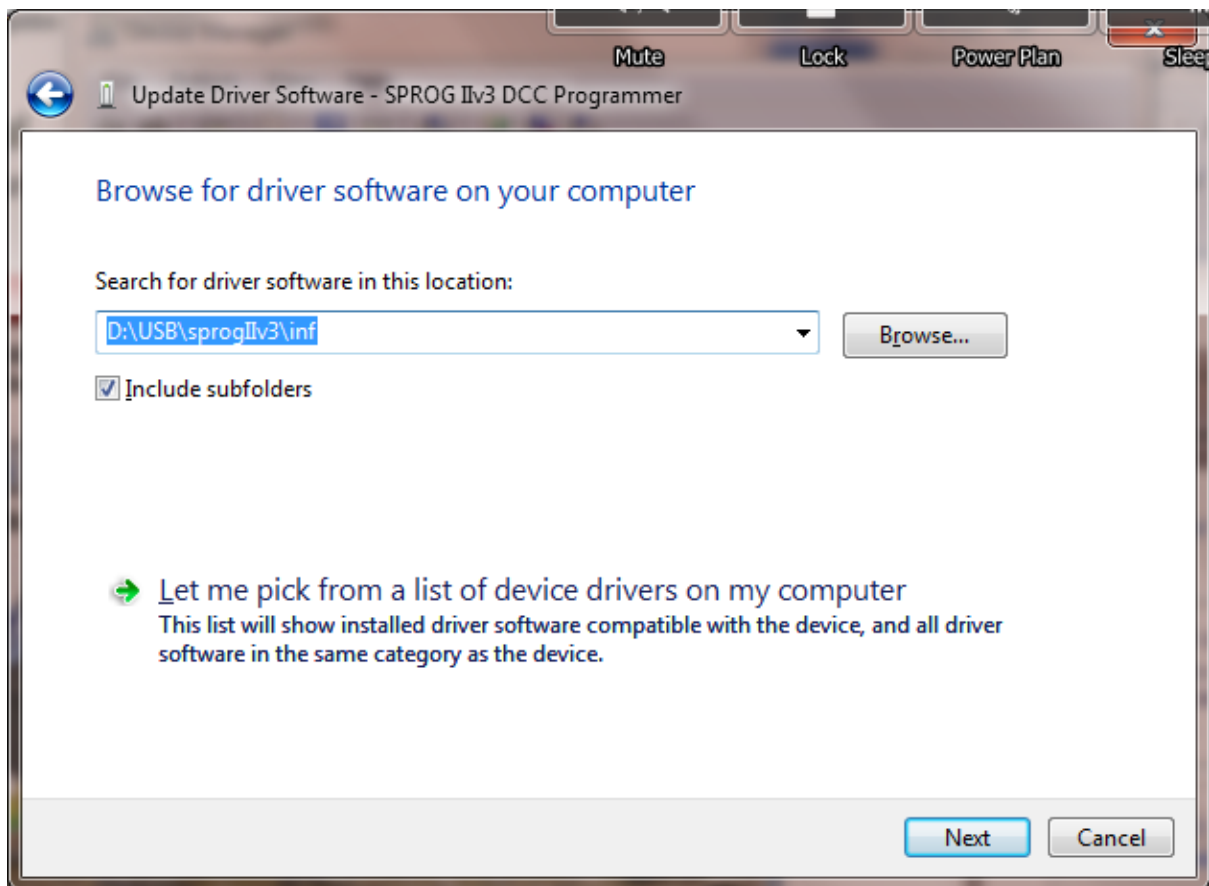
Open the Device Manager (Start -> Control Panel -> Device Manager) and expand the display of “Other device” where you should see the SPROG IIv3:



Point to the SPROG DECODER PROGRAMMER entry and press the Right mouse button. Select "Update Driver Software", or select Properties, and under the Drivers tab, click "Update Drivers".



Click "Browse my computer for driver software", and then click the Browse button to find the drivers on the CD-ROM, USB stick or your downloaded copy. If your USB stick drive is E:, for example, browse to the directory E:\USB\sprogIIV3\inf, as shown:



Check the "Include subfolders" box.

Click the "Next" button.

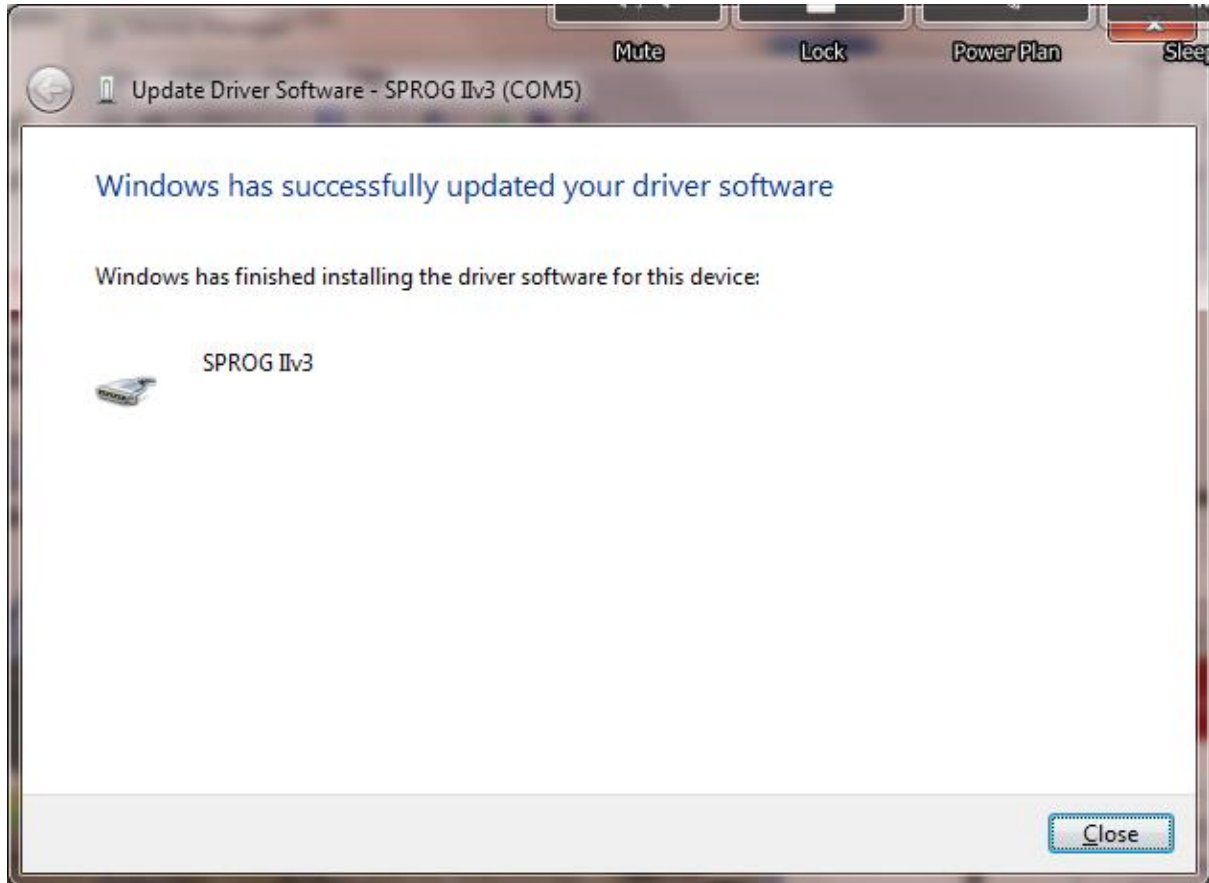
The wizard will take a short time to find and verify the drivers in this location.

You will then see a warning window similar to this:



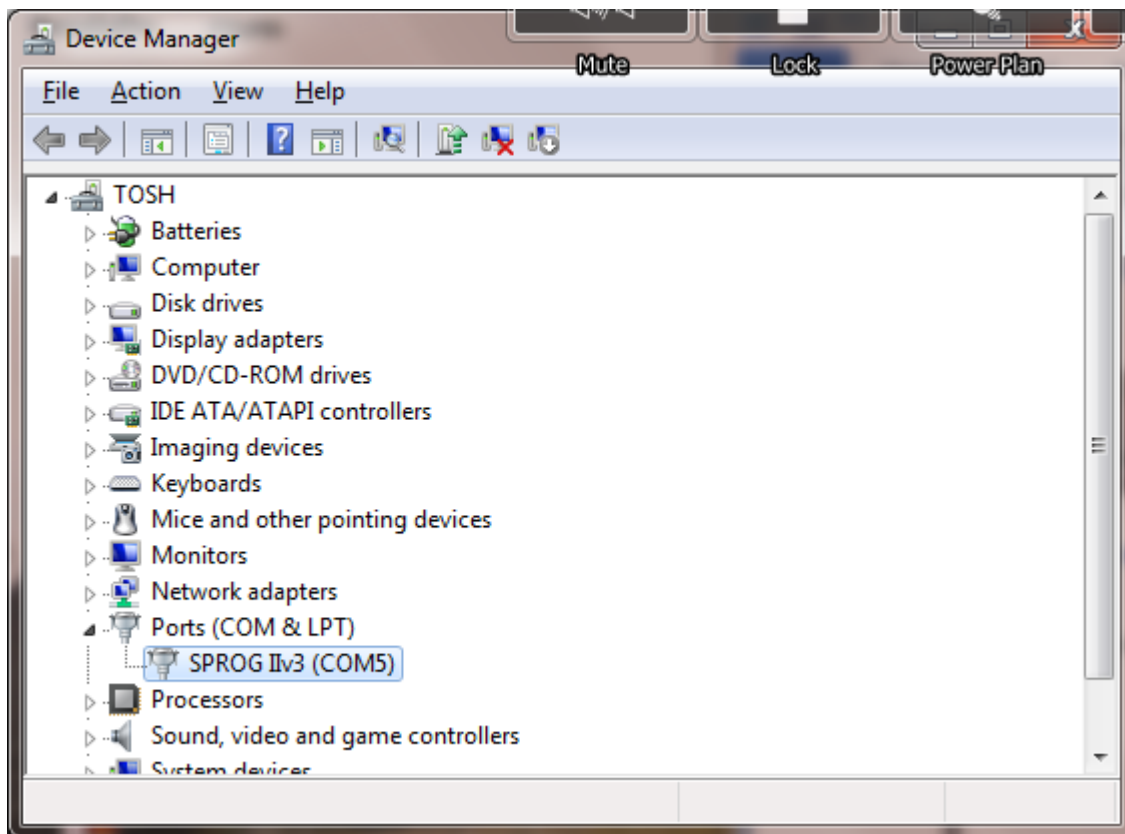
The base drivers are fully compatible with Windows7. To make them SPROG II specific, the .inf files are edited which, unfortunately, causes this dialogue to appear.

Click "Install this driver software anyway".



Click "Close".

Now return to the Device Manager, and the entry will have changed. The SPROG IIv3 will be listed under "Ports (COM & LPT)":



Make a note of the COM port assignment (COM5 in the example above) and close the device manager and control panel windows.

Driver installation is now complete, and it is time to start the software and use your SPROG II. Go on to the next major section of this Guide "Setting Preferences".