

Installing SPROG Ilv3, Ilv4, 3 and Nano Drivers on Windows 10

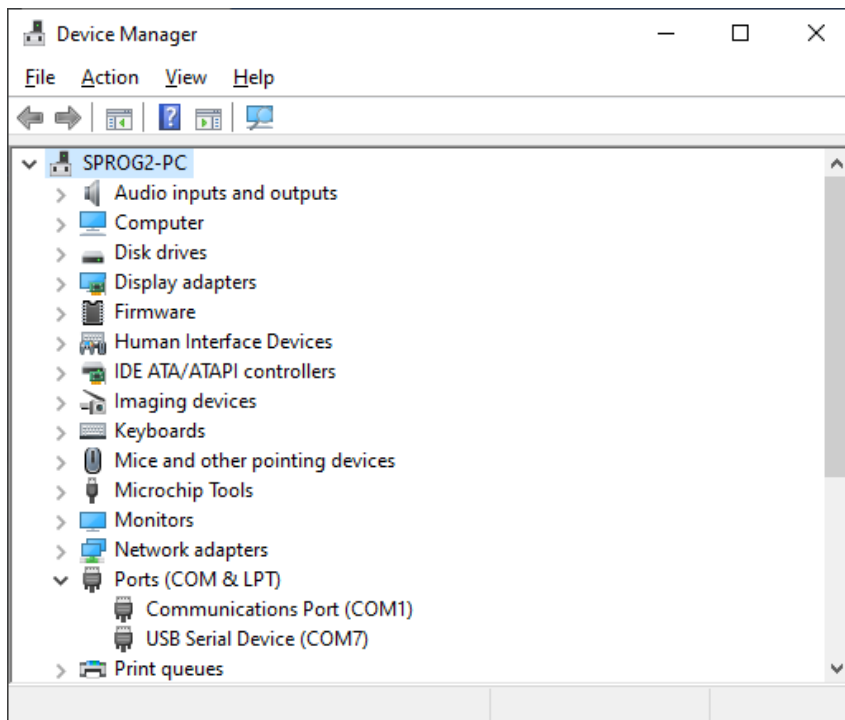
Updated 21st April 2021

This document applies to SPROG II versions 4 and 4, SPROG 3 (all versions) and SPROG Nano on Windows 10. For other products see the appropriate document on the SPROG DCC Ltd website <https://www.sprog-dcc.co.uk/download-page>

No drivers are required.

When the SPROG is connected and recognised by Windows it will appear as a “USB Serial Device” in the “Ports (COM & LPT)” section of the Device Manager.

To open the Device Manager, press the Windows Key on your keyboard, or click the start button on the Windows desktop and type “Device manager”.



Note the COM port that is assigned and use this when setting the connection preferences in DecoderPro or PanelPro.